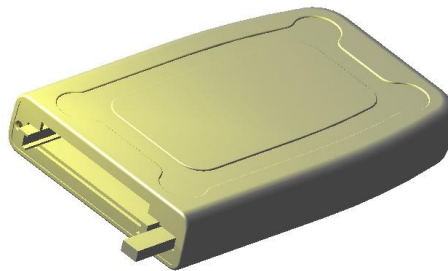




**ELAN DIGITAL SYSTEMS LTD.
LITTLE PARK FARM ROAD
SEGENSWORTH WEST
FAREHAM, HANTS PO15 5SJ
TEL: (44) (0)1489 579799
FAX: (44) (0)1489 577516**

**email: sales@elandigitalsystems.com
website: <http://www.elandigitalsystems.com>**

**U132 & U142 USB Cardbus Card Adapter
Users Guide
ES385**



Important Notice: Please refer to Safety Data 4.4, before using this equipment

All Trademarks are duly acknowledged.

REVISION HISTORY

ISSUE	PAGES	DATE	NOTES
1	12	14/03/2006	FIRST ISSUE
2	12	13/12/2006	Update for U142 information
3	12	04/07/2007	New USB cable (dual ends)

CONTENTS

1 OVERVIEW.....	4
2 USB PC CARD ADAPTER PACK CONTENTS.....	5
INSTALLATION.....	6
3 HARDWARE SPECIFICATION.....	11
POWER REQUIREMENTS.....	11
MECHANICAL.....	11
ENVIRONMENTAL.....	11
SAFETY DATA.....	12

Disclaimer

This document has been carefully prepared and checked. No responsibility can be assumed for inaccuracies. Elan reserves the right to make changes without prior notice to any products herein to improve functionality, reliability or other design aspects. Elan does not assume any liability for losses arising out of the use of any product described herein; neither does it convey any license under its patent rights or the rights of others. Elan does not guarantee the compatibility or fitness for purpose of any product listed herein. Elan products are not authorized for use as components in life support services or systems. Elan should be informed of any such intended use to determine suitability of the products.

Source code supplied with Elan PC-Cards and Compact Flash cards is provided "as-is" with no warranty, express or implied, as to its quality or fitness for a particular purpose. Elan assumes no liability for any direct or indirect losses arising from use of the supplied code.

Copyright © 2006 Elan Digital Systems Ltd.

Federal Communications Commission (FCC) Statement

This equipment has been tested and found to comply with the limits for a Class B digital device, pursuant to Part 15 of the FCC Rules. These limits are designed to provide reasonable protection against harmful interference in a residential installation. This equipment generates, uses, and can radiate radio frequency energy and, if not installed and used in accordance with the instructions, may cause harmful interference to radio communications. However, there is no guarantee that interference will not occur in a particular installation. If this equipment does cause harmful interference to radio or television reception, which can be determined by turning the equipment off and on, the user is encouraged to try to correct the interference by one or more of the following measures:

- Reorient or relocate the receiving antenna
- Increase the separation between the equipment and receiver
- Connect the equipment into an outlet on a circuit different from that to which the receiver is connected.
- Consult an Elan authorized dealer or service representative for help.

Elan is not responsible for any radio or television interference caused by using other than recommended cables and connectors or by unauthorized changes or modifications to this equipment. Unauthorized changes or modifications could void the user's authority to operate the equipment.

This device complies with Part 15 of the FCC Rules. Operation is subject to the following two conditions (1) this device may not cause harmful interference, and (2) this device must accept any interference received, including interference that may cause undesired operation.

Listed Products

The models covered by this installation guide are intended only for installation in Listed computers for use in business or home.

1 OVERVIEW

The U132 & U142 USB Cardbus Card Adapters are designed to provide a method of using a range of Cardbus cards via the USB port on a standard computer.

The adapter specifically supports Wireless Modem 3G cards. These cards are offered by many mobile phone operators world-wide.

Please note that the unique hardware design of the adapter has been developed especially for this type of wireless modem, so other card types are not supported. The adapter does not support memory cards.

For a full list of cards supported in the U142, please check Elan's website :

<http://www.elandigitalsystems.co.uk/support/ufaq/supportedcards.php>

Note that the U142 is a later model, which supports all of the card supported in the U132, as well as some additional cards.

The adapter has the following features:

- 32-bit Cardbus cards supported.
- 3.3V cards at 400mA typical, with over-current fault protection.
- USB 2.0 Full Speed interface.
- Supports Type I and II card sizes. Slot has ejector lever.
- Uses Elan's unique low power high performance silicon to convert the USB protocol to Cardbus card read/write access.
- Software driver required for each Cardbus card supported.
- DC jack connector for optional external power supply for use with power hungry cards (not normally required).

2 USB PC CARD ADAPTER PACK CONTENTS

The USB Cardbus Card Reader is shipped with the following items:

- 1 * U132 or U142 USB Cardbus Card Adapter.
- 1 * USB 2.0 cable. 1m long, fitted with type A moulded connectors at one end and two type B moulded connectors at the other end. The pair of connectors are of two types; one is marked 'POWER & DATA' and the other is marked "POWER ONLY". The second POWER ONLY connector is used to scavenge extra power from a second USB port.
- 1 * USB PC Card Adapter software driver installation CD.

INSTALLATION

Connect the supplied USB cable to the adapter as shown below:



Connect the other end of the USB cable to a spare USB port on your computer.

Windows will detect the adapter and launch the 'Found New Hardware Wizard'.



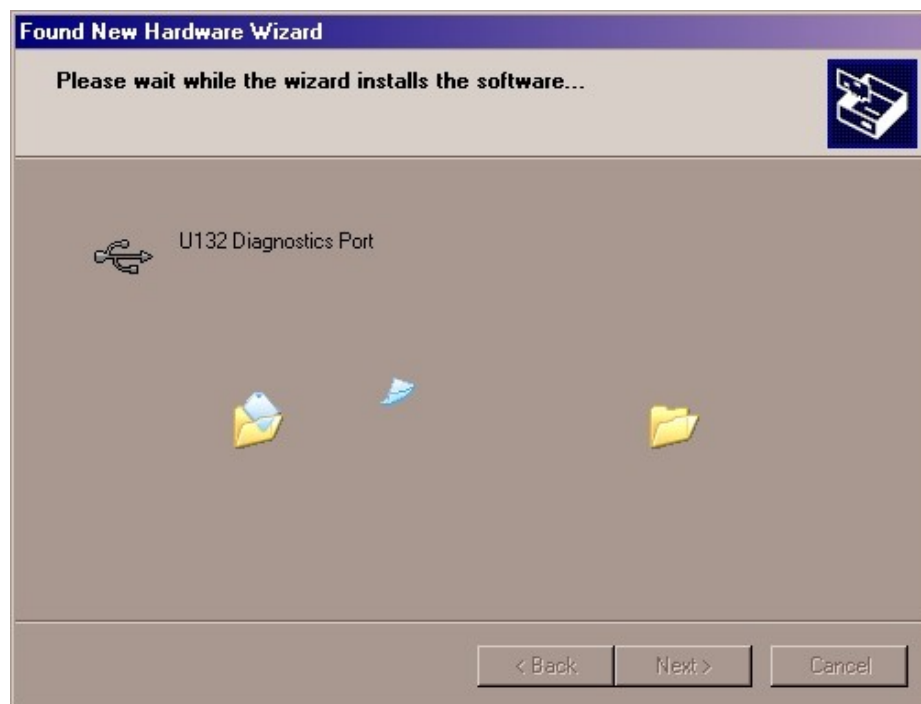
If your PC asks you whether it should connect to the Internet to search for a driver you can say 'No, not this time'.

Insert the USB Cardbus Card Adapter Installation CD-ROM into your CD-ROM drive.

Now select 'Install the software automatically'.



Click 'Next' and wait for the software to install.



When it has finished click 'Finish'.



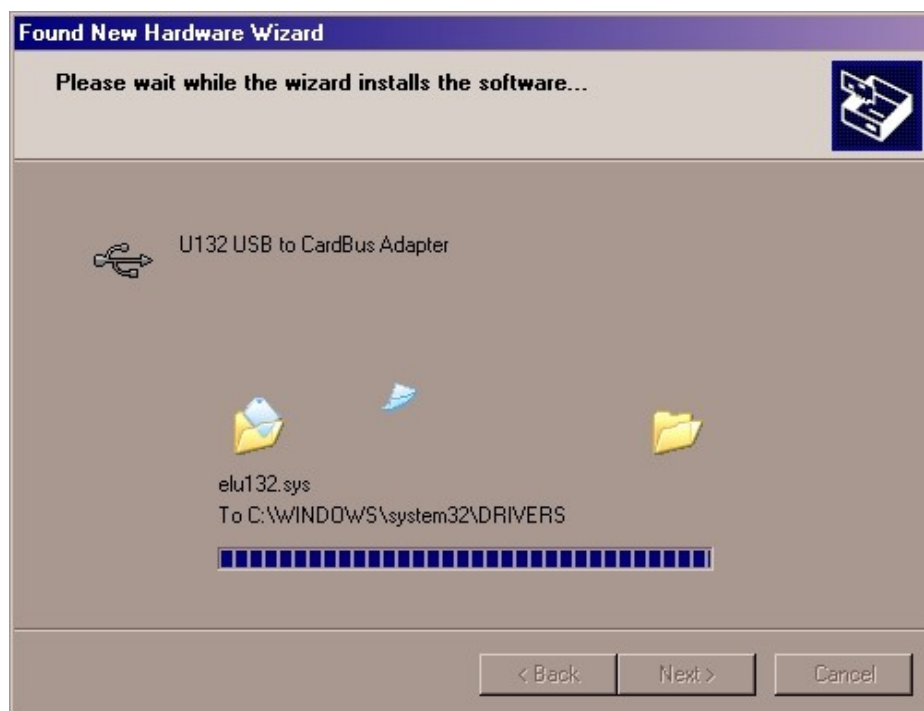
Because the adapter is a USB Composite Device, the "Found New Hardware" process will need to be performed twice. Again, when asked, do not allow connection to the Internet.



Now select 'Install the software automatically'.



Click 'Next' and wait for the software to install.



When it has finished click 'Finish'.



The USB Cardbus Adapter installation is now complete.

The adapter can now be used with the appropriate Cardbus cards. Refer to the documentation for these cards for the appropriate installation instructions.

3 HARDWARE SPECIFICATION

POWER REQUIREMENTS

All parameters @ 20°C unless stated

Supply Voltage via USB: \equiv 5.0V from host computer

Supply Voltage via optional: \equiv 6.0V from mains power adapter
external power input

Supply Current (active): 60mA
Supply Current (suspend): 1.2mA

The maximum current that can be drawn from the USB bus 500mA. Therefore the PCMCIA card cannot consume more than 440mA.

The spare (second) 'POWER ONLY' connector on the USB cable can be used to take power from a second USB slot. This will permit the PCMCIA card to consume more than 450mA.

Alternatively, the optional external power connection can be used. However, the total current drawn through the external power input must not exceed 750mA. Hence, the PCMCIA card cannot consume more than 700mA.

Note: A mains adapter is not supplied with the USB reader.

MECHANICAL

Mass: 130g typ.
Case Material Data: ABS (PolyLac PA-765A) (UL94V rated)
Size (typical in mm): 140mm x 85mm x 27mm

ENVIRONMENTAL

Humidity: <80% non condensing
General Operating Temperature: -10°C to +45°C Ambient
Storage Temperature: -40°C to +80°C Ambient
Operating Location: Indoor or under-cover use only

SAFETY DATA



Important Safety Precautions Always observe these when using the USB PC CARD Reader

The USB Cardbus Card Adapter contains no user serviceable parts inside. Do not open the plastic housing.

Do not use the equipment if the housing is damaged or is poorly fitting. In such a case do not connect anything to the USB Adapter to avoid a hazard. The USB Cardbus Card Adapter will have to be repaired or replaced in such a situation.

Do not exceed the maximum ratings listed in the specification.

Never use the equipment if it becomes damp for any reason. This includes situations where condensation has formed on the unit due to sudden temperature or humidity changes.

Never use a USB cable that is damaged or has insufficient or incomplete insulation. Only use USB 2.0 cables.